

RoHS TEST REPORT

Report No. : B-R210737719

Date: Jul. 27, 2021

Page 1 of 27

Applicant : Shenzhen Huamai Environmental Protection Co., LTD

Address : No.8, Changshan Industrial Zone, Liulian Community,
Pingdi Street, Longgang District, Shenzhen City.

Client No : 0755C861

Manufacturer : Shenzhen Huamai Environmental Protection Co., LTD

Address : No.8, Changshan Industrial Zone, Liulian Community,
Pingdi Street, Longgang District, Shenzhen City.



Report on the submitted sample said to be

Sample Name : Intelligent pure water machine

Model No : P30

Sample model : P30

Sample Received Date : Jul. 16, 2021

Complete Date : Jul. 27, 2021

Test Requested : As specified by client, to determine the Cadmium, Lead, Mercury, Hexavalent Chromium, PBBs / PBDEs, Bis-(2-ethylhexyl) Phthalate (DEHP), Diisobutyl phthalate(DIBP), Dibutyl Phthalate (DBP) & Benzylbutyl Phthalate (BBP) content in the submitted sample.

Test Result(s) : Conform to RoHS Directive 2011/65/EU Annex II amending Annex (EU)2015/863 and amending Annex (EU)2017/2102.



Company No. 07113834

*****FOR FURTHER DETAILS, PLEASE REFER TO THE FOLLOWING PAGE(S)*****

Written by: Chen Qin
(Chen Qin)

Inspected by: Austin Zhong
(Austin Zhong)



Approved by: Martin Wang
(Martin Wang)

This report is considered invalidated without the Special Seal for Inspection of the Beide (Shenzhen) Product Service Limited, This report shall not be altered, increased or deleted. The results shown in this test report refer only to the sample(s) tested. Without written approval of Beide (Shenzhen) Product Service Limited, this test report shall not be copied except in full and published as advertisement.

RoHS TEST REPORT

Report No. : B-R210737719

Date: Jul. 27, 2021

Page 3 of 27

Test item	Unit	Limit	Result			
			White plastic cover(1)	White plastic case(2)	White plastic tube(3)	White plastic parts(4)
Nonabromobiphenyl	mg/kg	/	N.D.	N.D.	N.D.	N.D.
Decabromobiphenyl	mg/kg	/	N.D.	N.D.	N.D.	N.D.
Polybrominated Diphenyl Ethers (PBDEs)	mg/kg	1000	N.D.	N.D.	N.D.	N.D.
Monobromodiphenyl Ether	mg/kg	/	N.D.	N.D.	N.D.	N.D.
Dibromodiphenyl Ether	mg/kg	/	N.D.	N.D.	N.D.	N.D.
Tribromodiphenyl Ether	mg/kg	/	N.D.	N.D.	N.D.	N.D.
Tetrabromodiphenyl Ether	mg/kg	/	N.D.	N.D.	N.D.	N.D.
Pentabromodiphenyl Ether	mg/kg	/	N.D.	N.D.	N.D.	N.D.
Hexabromodiphenyl Ether	mg/kg	/	N.D.	N.D.	N.D.	N.D.
Heptabromodiphenyl Ether	mg/kg	/	N.D.	N.D.	N.D.	N.D.
Octabromodiphenyl Ether	mg/kg	/	N.D.	N.D.	N.D.	N.D.
Nonabromodiphenyl Ether	mg/kg	/	N.D.	N.D.	N.D.	N.D.
Decabromodiphenyl Ether	mg/kg	/	N.D.	N.D.	N.D.	N.D.
Diisobutyl phthalate(DIBP)	mg/kg	1000	N.D.	N.D.	N.D.	N.D.
Dibutyl Phthalate (DBP)	%(w/w)	1000	N.D.	N.D.	N.D.	N.D.
Benzylbutyl Phthalate (BBP)	%(w/w)	1000	N.D.	N.D.	N.D.	N.D.
Bis-(2-ethylhexyl) Phthalate (DEHP)	%(w/w)	1000	N.D.	N.D.	N.D.	N.D.

This report is considered invalidated without the Special Seal for Inspection of the Beide (Shenzhen) Product Service Limited, This report shall not be altered, increased or deleted. The results shown in this test report refer only to the sample(s) tested. Without written approval of Beide (Shenzhen) Product Service Limited, this test report shall not be copied except in full and published as advertisement.

RoHS TEST REPORT

Report No. : B-R210737719

Date: Jul. 27, 2021

Page 5 of 27

Test item	Unit	Limit	Result			
			Plastic nut(5)	White rubber ring(6)	Sponge(7)	Translucent plastic parts 1(8)
Dibromodiphenyl Ether	mg/kg	/	N.D.	N.D.	N.D.	N.D.
Tribromodiphenyl Ether	mg/kg	/	N.D.	N.D.	N.D.	N.D.
Tetrabromodiphenyl Ether	mg/kg	/	N.D.	N.D.	N.D.	N.D.
Pentabromodiphenyl Ether	mg/kg	/	N.D.	N.D.	N.D.	N.D.
Hexabromodiphenyl Ether	mg/kg	/	N.D.	N.D.	N.D.	N.D.
Heptabromodiphenyl Ether	mg/kg	/	N.D.	N.D.	N.D.	N.D.
Octabromodiphenyl Ether	mg/kg	/	N.D.	N.D.	N.D.	N.D.
Nonabromodiphenyl Ether	mg/kg	/	N.D.	N.D.	N.D.	N.D.
Decabromodiphenyl Ether	mg/kg	/	N.D.	N.D.	N.D.	N.D.
Diisobutyl phthalate(DIBP)	mg/kg	1000	N.D.	N.D.	N.D.	N.D.
Dibutyl Phthalate (DBP)	%(w/w)	1000	N.D.	N.D.	N.D.	N.D.
Benzylbutyl Phthalate (BBP)	%(w/w)	1000	N.D.	N.D.	N.D.	N.D.
Bis-(2-ethylhexyl) Phthalate (DEHP)	%(w/w)	1000	N.D.	N.D.	N.D.	N.D.

This report is considered invalidated without the Special Seal for Inspection of the Beide (Shenzhen) Product Service Limited, This report shall not be altered, increased or deleted. The results shown in this test report refer only to the sample(s) tested. Without written approval of Beide (Shenzhen) Product Service Limited, this test report shall not be copied except in full and published as advertisement.

RoHS TEST REPORT

Report No. : B-R210737719

Date: Jul. 27, 2021

Page 7 of 27

Test item	Unit	Limit	Result			
			Transparent rubber parts(9)	White rubber stopper(10)	Translucent plastic parts 2(11)	Black rubber parts(12)
Dibromodiphenyl Ether	mg/kg	/	N.D.	N.D.	N.D.	N.D.
Tribromodiphenyl Ether	mg/kg	/	N.D.	N.D.	N.D.	N.D.
Tetrabromodiphenyl Ether	mg/kg	/	N.D.	N.D.	N.D.	N.D.
Pentabromodiphenyl Ether	mg/kg	/	N.D.	N.D.	N.D.	N.D.
Hexabromodiphenyl Ether	mg/kg	/	N.D.	N.D.	N.D.	N.D.
Heptabromodiphenyl Ether	mg/kg	/	N.D.	N.D.	N.D.	N.D.
Octabromodiphenyl Ether	mg/kg	/	N.D.	N.D.	N.D.	N.D.
Nonabromodiphenyl Ether	mg/kg	/	N.D.	N.D.	N.D.	N.D.
Decabromodiphenyl Ether	mg/kg	/	N.D.	N.D.	N.D.	N.D.
Diisobutyl phthalate(DIBP)	mg/kg	1000	N.D.	N.D.	N.D.	N.D.
Dibutyl Phthalate (DBP)	%(w/w)	1000	N.D.	N.D.	N.D.	N.D.
Benzylbutyl Phthalate (BBP)	%(w/w)	1000	N.D.	N.D.	N.D.	N.D.
Bis-(2-ethylhexyl) Phthalate (DEHP)	%(w/w)	1000	N.D.	N.D.	N.D.	N.D.

This report is considered invalidated without the Special Seal for Inspection of the Beide (Shenzhen) Product Service Limited, This report shall not be altered, increased or deleted. The results shown in this test report refer only to the sample(s) tested. Without written approval of Beide (Shenzhen) Product Service Limited, this test report shall not be copied except in full and published as advertisement.

RoHS TEST REPORT

Report No. : B-R210737719

Date: Jul. 27, 2021

Page 9 of 27

Test item	Unit	Limit	Result			
			Black plastic parts(13)	Metal gasket(14)	Long screw(15)	Pointed screw(16)
Dibromodiphenyl Ether	mg/kg	/	N.D.	N.D.	N.D.	N.D.
Tribromodiphenyl Ether	mg/kg	/	N.D.	N.D.	N.D.	N.D.
Tetrabromodiphenyl Ether	mg/kg	/	N.D.	N.D.	N.D.	N.D.
Pentabromodiphenyl Ether	mg/kg	/	N.D.	N.D.	N.D.	N.D.
Hexabromodiphenyl Ether	mg/kg	/	N.D.	N.D.	N.D.	N.D.
Heptabromodiphenyl Ether	mg/kg	/	N.D.	N.D.	N.D.	N.D.
Octabromodiphenyl Ether	mg/kg	/	N.D.	N.D.	N.D.	N.D.
Nonabromodiphenyl Ether	mg/kg	/	N.D.	N.D.	N.D.	N.D.
Decabromodiphenyl Ether	mg/kg	/	N.D.	N.D.	N.D.	N.D.
Diisobutyl phthalate(DIBP)	mg/kg	1000	N.D.	N/A	N/A	N/A
Dibutyl Phthalate (DBP)	%(w/w)	1000	N.D.	N/A	N/A	N/A
Benzylbutyl Phthalate (BBP)	%(w/w)	1000	N.D.	N/A	N/A	N/A
Bis-(2-ethylhexyl) Phthalate (DEHP)	%(w/w)	1000	N.D.	N/A	N/A	N/A

This report is considered invalidated without the Special Seal for Inspection of the Beide (Shenzhen) Product Service Limited, This report shall not be altered, increased or deleted. The results shown in this test report refer only to the sample(s) tested. Without written approval of Beide (Shenzhen) Product Service Limited, this test report shall not be copied except in full and published as advertisement.

RoHS TEST REPORT

Report No. : B-R210737719

Date: Jul. 27, 2021

Page 11 of 27

Test item	Unit	Limit	Result			
			Screw(17)	Spring (18)	Metal parts(19)	White thread(20)
Dibromodiphenyl Ether	mg/kg	/	N.D.	N.D.	N.D.	N.D.
Tribromodiphenyl Ether	mg/kg	/	N.D.	N.D.	N.D.	N.D.
Tetrabromodiphenyl Ether	mg/kg	/	N.D.	N.D.	N.D.	N.D.
Pentabromodiphenyl Ether	mg/kg	/	N.D.	N.D.	N.D.	N.D.
Hexabromodiphenyl Ether	mg/kg	/	N.D.	N.D.	N.D.	N.D.
Heptabromodiphenyl Ether	mg/kg	/	N.D.	N.D.	N.D.	N.D.
Octabromodiphenyl Ether	mg/kg	/	N.D.	N.D.	N.D.	N.D.
Nonabromodiphenyl Ether	mg/kg	/	N.D.	N.D.	N.D.	N.D.
Decabromodiphenyl Ether	mg/kg	/	N.D.	N.D.	N.D.	N.D.
Diisobutyl phthalate(DIBP)	mg/kg	1000	N/A	N/A	N/A	N.D.
Dibutyl Phthalate (DBP)	%(w/w)	1000	N/A	N/A	N/A	N.D.
Benzylbutyl Phthalate (BBP)	%(w/w)	1000	N/A	N/A	N/A	N.D.
Bis-(2-ethylhexyl) Phthalate (DEHP)	%(w/w)	1000	N/A	N/A	N/A	N.D.

This report is considered invalidated without the Special Seal for Inspection of the Beide (Shenzhen) Product Service Limited, This report shall not be altered, increased or deleted. The results shown in this test report refer only to the sample(s) tested. Without written approval of Beide (Shenzhen) Product Service Limited, this test report shall not be copied except in full and published as advertisement.

RoHS TEST REPORT

Report No. : B-R210737719

Date: Jul. 27, 2021

Page 13 of 27

Test item	Unit	Limit	Result			
			Green thread(21)	Blue thread(22)	Red thread(23)	Black leather(24)
Dibromodiphenyl Ether	mg/kg	/	N.D.	N.D.	N.D.	N.D.
Tribromodiphenyl Ether	mg/kg	/	N.D.	N.D.	N.D.	N.D.
Tetrabromodiphenyl Ether	mg/kg	/	N.D.	N.D.	N.D.	N.D.
Pentabromodiphenyl Ether	mg/kg	/	N.D.	N.D.	N.D.	N.D.
Hexabromodiphenyl Ether	mg/kg	/	N.D.	N.D.	N.D.	N.D.
Heptabromodiphenyl Ether	mg/kg	/	N.D.	N.D.	N.D.	N.D.
Octabromodiphenyl Ether	mg/kg	/	N.D.	N.D.	N.D.	N.D.
Nonabromodiphenyl Ether	mg/kg	/	N.D.	N.D.	N.D.	N.D.
Decabromodiphenyl Ether	mg/kg	/	N.D.	N.D.	N.D.	N.D.
Diisobutyl phthalate(DIBP)	mg/kg	1000	N.D.	N.D.	N.D.	N.D.
Dibutyl Phthalate (DBP)	%(w/w)	1000	N.D.	N.D.	N.D.	N.D.
Benzylbutyl Phthalate (BBP)	%(w/w)	1000	N.D.	N.D.	N.D.	N.D.
Bis-(2-ethylhexyl) Phthalate (DEHP)	%(w/w)	1000	N.D.	N.D.	N.D.	N.D.

This report is considered invalidated without the Special Seal for Inspection of the Beide (Shenzhen) Product Service Limited, This report shall not be altered, increased or deleted. The results shown in this test report refer only to the sample(s) tested. Without written approval of Beide (Shenzhen) Product Service Limited, this test report shall not be copied except in full and published as advertisement.

RoHS TEST REPORT

Report No. : B-R210737719

Date: Jul. 27, 2021

Page 15 of 27

Test item	Unit	Limit	Result
			Core(25)
Dibromodiphenyl Ether	mg/kg	/	N.D.
Tribromodiphenyl Ether	mg/kg	/	N.D.
Tetrabromodiphenyl Ether	mg/kg	/	N.D.
Pentabromodiphenyl Ether	mg/kg	/	N.D.
Hexabromodiphenyl Ether	mg/kg	/	N.D.
Heptabromodiphenyl Ether	mg/kg	/	N.D.
Octabromodiphenyl Ether	mg/kg	/	N.D.
Nonabromodiphenyl Ether	mg/kg	/	N.D.
Decabromodiphenyl Ether	mg/kg	/	N.D.
Diisobutyl phthalate(DIBP)	mg/kg	1000	N/A
Dibutyl Phthalate (DBP)	%(w/w)	1000	N/A
Benzylbutyl Phthalate (BBP)	%(w/w)	1000	N/A
Bis-(2-ethylhexyl) Phthalate (DEHP)	%(w/w)	1000	N/A

This report is considered invalidated without the Special Seal for Inspection of the Beide (Shenzhen) Product Service Limited, This report shall not be altered, increased or deleted. The results shown in this test report refer only to the sample(s) tested. Without written approval of Beide (Shenzhen) Product Service Limited, this test report shall not be copied except in full and published as advertisement.

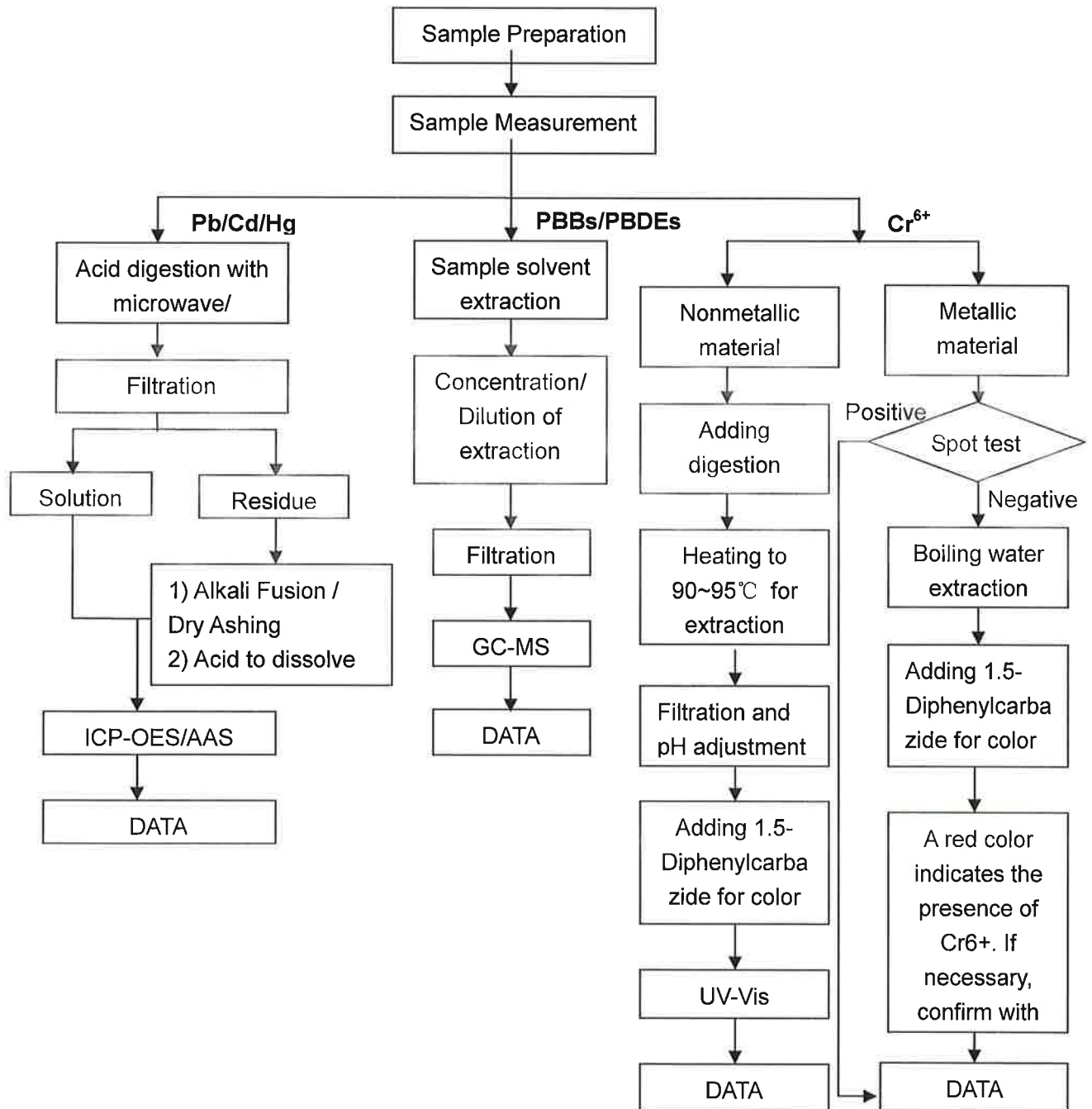
RoHS TEST REPORT

Report No. : B-R210737719

Date: Jul. 27, 2021

Page 17 of 27

RoHS Testing Flow Chart



This report is considered invalidated without the Special Seal for Inspection of the Beide (Shenzhen) Product Service Limited, This report shall not be altered, increased or deleted. The results shown in this test report refer only to the sample(s) tested. Without written approval of Beide (Shenzhen) Product Service Limited, this test report shall not be copied except in full and published as advertisement.

RoHS TEST REPORT

Report No. : B-R210737719

Date: Jul. 27, 2021

Page 19 of 27

Photographs of Sample



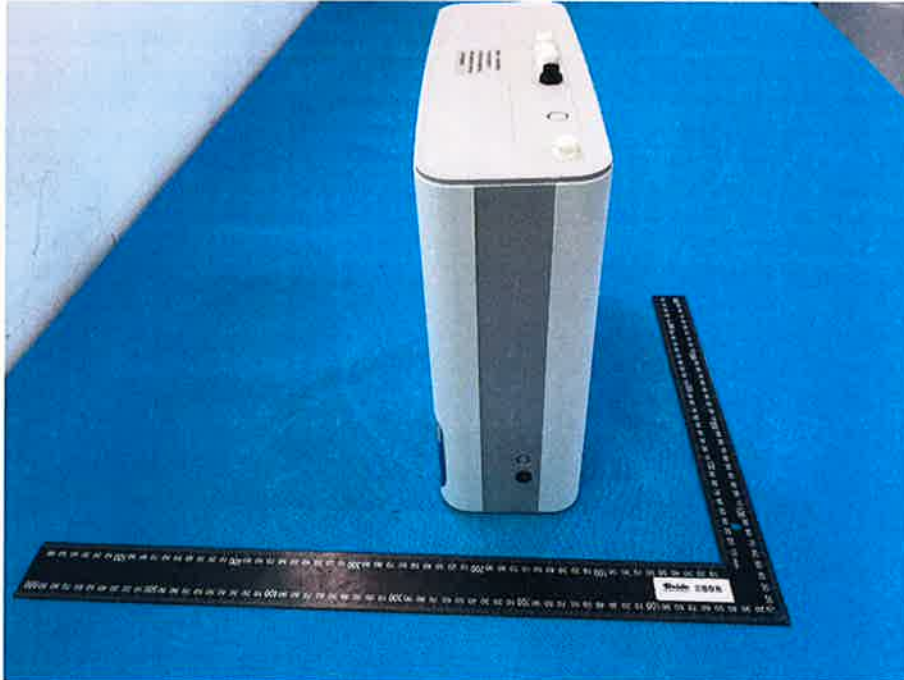
This report is considered invalidated without the Special Seal for Inspection of the Beide (Shenzhen) Product Service Limited, This report shall not be altered, increased or deleted. The results shown in this test report refer only to the sample(s) tested. Without written approval of Beide (Shenzhen) Product Service Limited, this test report shall not be copied except in full and published as advertisement.

RoHS TEST REPORT

Report No. : B-R210737719

Date: Jul. 27, 2021

Page 21 of 27



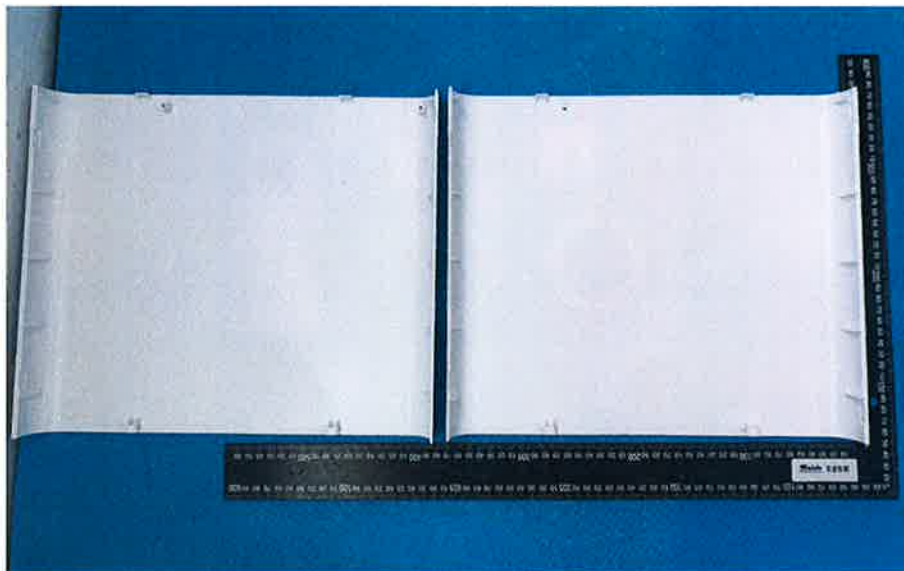
This report is considered invalidated without the Special Seal for Inspection of the Beide (Shenzhen) Product Service Limited, This report shall not be altered, increased or deleted. The results shown in this test report refer only to the sample(s) tested. Without written approval of Beide (Shenzhen) Product Service Limited, this test report shall not be copied except in full and published as advertisement.

RoHS TEST REPORT

Report No. : B-R210737719

Date: Jul. 27, 2021

Page 23 of 27



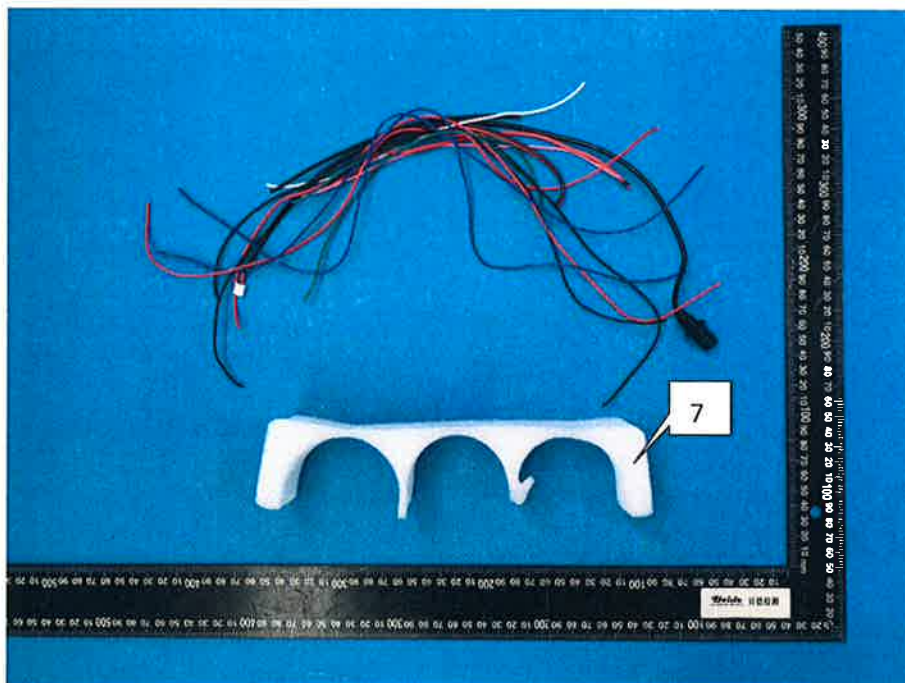
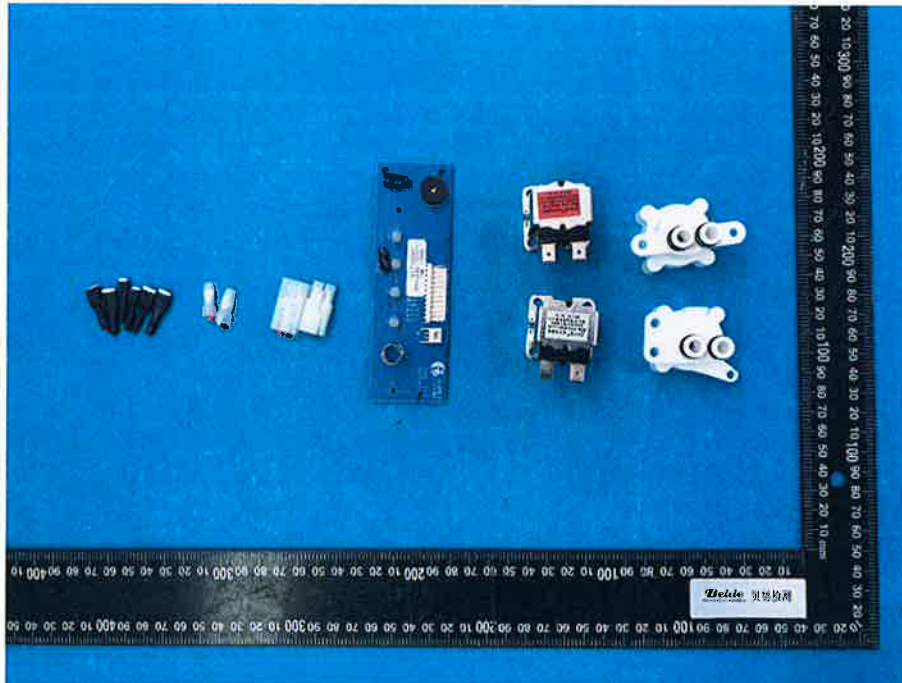
This report is considered invalidated without the Special Seal for Inspection of the Beide (Shenzhen) Product Service Limited, This report shall not be altered, increased or deleted. The results shown in this test report refer only to the sample(s) tested. Without written approval of Beide (Shenzhen) Product Service Limited, this test report shall not be copied except in full and published as advertisement.

RoHS TEST REPORT

Report No. : B-R210737719

Date: Jul. 27, 2021

Page 25 of 27



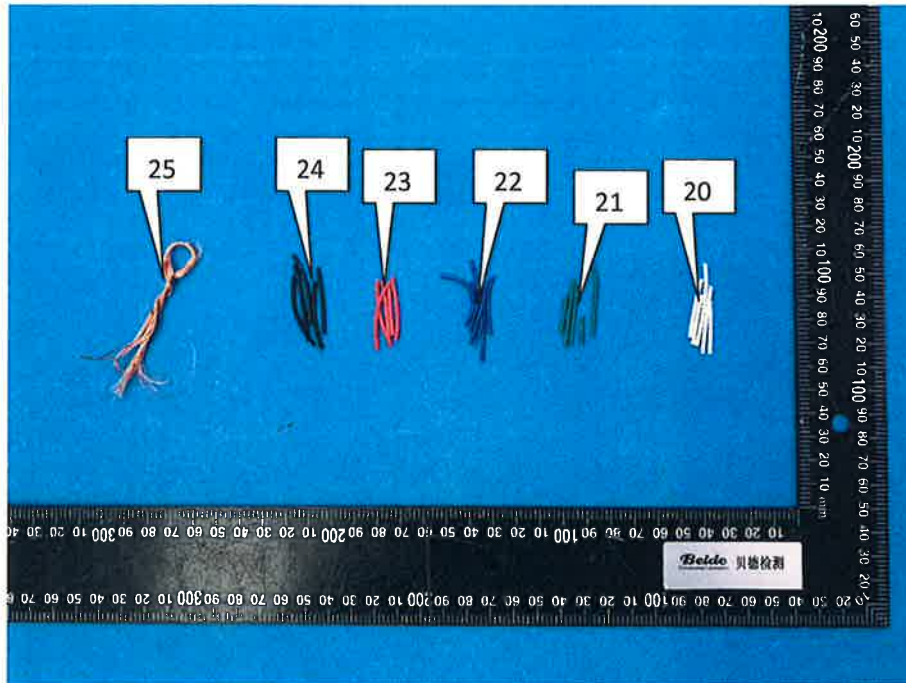
This report is considered invalidated without the Special Seal for Inspection of the Beide (Shenzhen) Product Service Limited, This report shall not be altered, increased or deleted. The results shown in this test report refer only to the sample(s) tested. Without written approval of Beide (Shenzhen) Product Service Limited, this test report shall not be copied except in full and published as advertisement.

RoHS TEST REPORT

Report No. : B-R210737719

Date: Jul. 27, 2021

Page 27 of 27



End of Report

This report is considered invalidated without the Special Seal for Inspection of the Beide (Shenzhen) Product Service Limited, This report shall not be altered, increased or deleted. The results shown in this test report refer only to the sample(s) tested. Without written approval of Beide (Shenzhen) Product Service Limited, this test report shall not be copied except in full and published as advertisement.