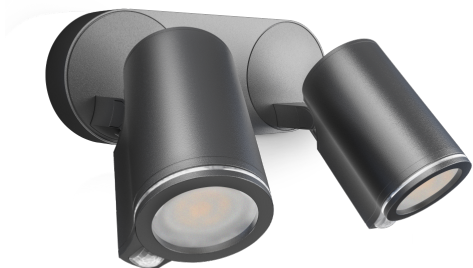


Sensor-switched LED floodlight

# Spot DUO SC

with motion detector & Bluetooth  
EAN 4007841 058654  
Article number 058654



LED

20.000 h

3000 K

3000K warm-white



38°



2x Infrared sensor  
90°



max. 10 m



IP44



2 - 2000 lux (via  
App)



Light source  
replaceable by end  
user



Control gear not  
exchangeable



manual override 4h

## Function description

Excellent design. Intelligent technology. Turning through 180° and tilting through 90°, the LED double spot's two spotlight heads (2x 520 lm) provide 3000 K warm-white light. Wirelessly interconnectable by Bluetooth and adjustable and controllable via free app (twilight, time, lighting groups). Two 90° infrared sensors reliably monitor the surrounding area. Included lamp.

## Technical specifications

Dimensions (L x W x H)	175 x 247 x 98 mm
With lamp	Yes, LED lamp
With motion detector	Yes
Manufacturer's Warranty	3 years
Settings via	Bluetooth
Version	with motion detector & Bluetooth
PU1, EAN	4007841058654
Application, place	Outdoors
Application, room	outdoors, all round the building, terrace / balcony, courtyard & driveway
Colour	Anthracite
Includes corner wall mount	No
Installation site	wall
Installation	Wall, Surface wiring
Impact resistance	IK03
IP-rating	IP44
Protection class	I

Mechanical scalability	No
Reach, radial	r = 2 m (3 m <sup>2</sup> )
Reach, tangential	r = 10 m (79 m <sup>2</sup> )
Photo-cell controller	Yes
Luminous flux total product	1024 lm
Measured luminous flux (360°)	1024 lm
Total product efficiency	70,1 lm/W
Colour temperature	3000 K
Colour variation LED	SDCM5
Lamp	LED can be replaced
Service life LED L70B50 (25°)	> 20000 h
Soft light start	No
Continuous light	selectable, 4h
Functions	Timer, Master/slave override
Twilight setting	2 – 2000 lx
Time setting	5 s – 60 Min.
Basic light level function	No

<https://www.steinel.de>

Subject to technical modifications

09.2023 Page 1 from 3

Sensor-switched LED floodlight

# Spot DUO SC

with motion detector & Bluetooth  
EAN 4007841 058654  
Article number 058654



## Technical specifications

Ambient temperature	-20 – 40 °C
Housing material	Aluminium
Cover material	Plastic, transparent
Mains power supply	220 – 240 V / 50 – 60 Hz
Mounting height max.	2,50 m
Slave modeselectable	Yes
Sneak-by guard	No
Capability of masking out individual segments	No
Electronic scalability	No

Main light adjustable	No
Twilight setting TEACH	Yes
Interconnection	Yes
Interconnection via	Bluetooth
Output	14,6 W
Colour Rendering Index CRI	= 81
Optimum mounting height	2 m
Detection angle	90 °

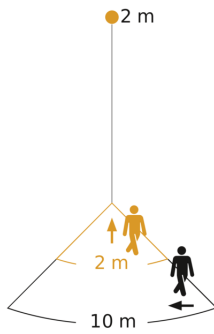
Sensor-switched LED floodlight

# Spot DUO SC

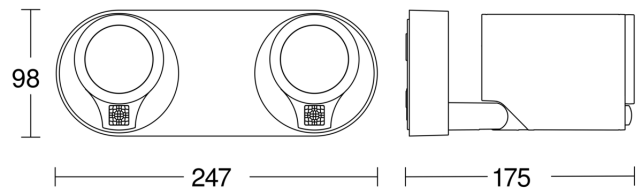
with motion detector & Bluetooth  
EAN 4007841 058654  
Article number 058654



## Detection Zone

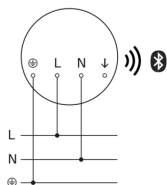


## Dimension Drawing



Possible mounting height: 1,80 m - 2,50 m  
Orange: radial  
Black: tangential

## Circuit diagram Bluetooth



## Master/master bluetooth interconnection circuit diagram

