

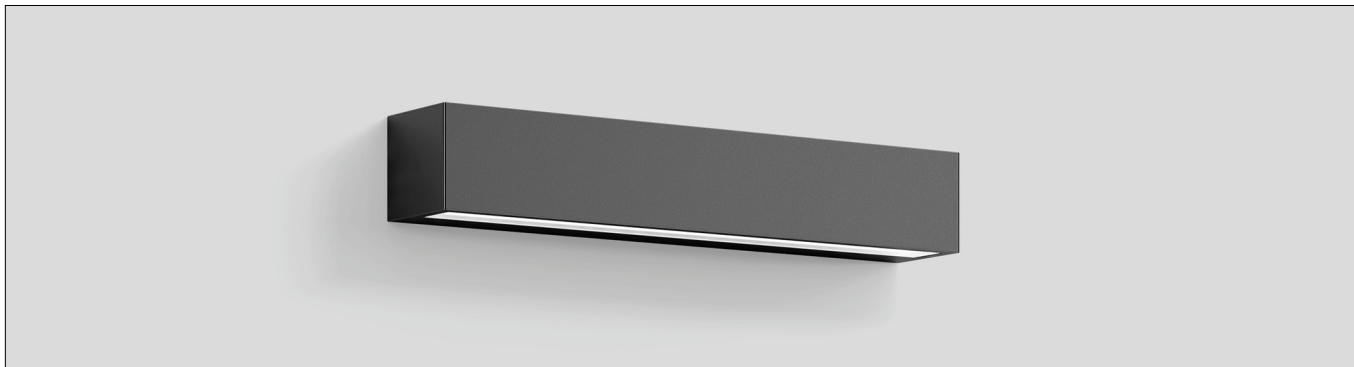
BEGA**24 585**

Wall luminaire

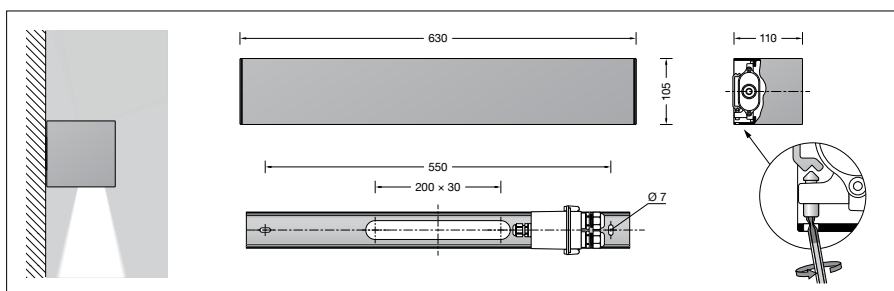


Project · Reference number

Date

**Product data sheet****Product description**

Luminaire made of aluminium and stainless steel
 BEGA Unidure® coating technology
 Safety glass with optical structure
 Reflector made of pure anodised aluminium
 Mounting bar with 2 elongated holes
 7 mm width, 550 mm spacing
 Connection box with 2 cable entries for through-wiring of the mains supply cable \varnothing 5-13 mm, max. $5 \times 2,5^2$
 Connecting terminals and earth conductor terminal $2,5^2$
 BEGA Ultimate Driver®
 LED power supply unit
 220-240 V \sim 0/50-60 Hz
 DC 176-264 V
 DALI-controllable
 Number of DALI addresses: 1
 Basic insulation is provided between the mains and control cables
 BEGA Thermal Control®
 Temporary thermal regulation to protect temperature-sensitive components without switching off the luminaire
 Safety class I
 Protection class IP 65
 Dust-tight and protection against water jets
 Impact strength IK06
 Protection against mechanical impacts < 1 joule
 – Safety mark
 – Conformity mark
 Weight: 6.0 kg
 This product contains light sources of energy efficiency class(es) C

**Application**

Wall luminaire with light emission on one side and symmetrical light distribution to illuminate façade and wall surfaces.
 A luminaire which allows interesting illumination concepts individually, in rows or groups.
 The luminaire can be installed in any burning position.

Dark Sky

The light of this luminaire is directed evenly and highly efficiently onto the surface to be illuminated. No light is emitted into the upper half-space of the luminaire.

Lamp

Module connected wattage	23.2 W
Luminaire connected wattage	26.5 W
Rated temperature	$t_a = 25 \text{ }^\circ\text{C}$
Ambient temperature	$t_{a \text{ max}} = 50 \text{ }^\circ\text{C}$

24 585 K3

Module designation	2x LED-1204/830
Colour temperature	3000 K
Colour rendering index	CRI > 80
Module luminous flux	4510 lm
Luminaire luminous flux	2188 lm
Luminaire luminous efficiency	82,6 lm/W

24 585 K4

Module designation	2x LED-1204/840
Colour temperature	4000 K
Colour rendering index	CRI > 80
Module luminous flux	4640 lm
Luminaire luminous flux	2251 lm
Luminaire luminous efficiency	84,9 lm/W

Service life · Ambient temperature

Rated temperature $t_a = 25 \text{ }^\circ\text{C}$	
LED psu:	> 50,000h
LED module:	> 200,000h (L80B50) 100,000h (L90B50)

Ambient temperature max. $t_a = 50 \text{ }^\circ\text{C}$ (100 %)

LED psu:	50,000h
LED module:	> 200,000h (L80B50) 100,000h (L90B50)

Inrush current

Inrush current: 5 A / 100 μs
 Maximum number of luminaires of this type per miniature circuit breaker:
 B 10A: 42 luminaires
 B 16A: 68 luminaires
 C 10A: 42 luminaires
 C 16A: 68 luminaires

Lighting technology

Luminaire data for the DIALux lighting design program for outdoor lighting, street lighting and indoor lighting, as well as luminaire data in EULUMDAT and IES format are available on the BEGA website at www.bega.com.

Ratio of luminous flux

Luminous flux upper half-space	0 %
Luminous flux lower half-space	100 %

BUG rating according to IES TM-15-07:
2-0-0

CEN Flux Code according to EN 13032-2:
77-94-99-100-100

Article No. 24 585

LED colour temperature optionally 3000 K or 4000 K
 3000 K – Article number + **K3**
 4000 K – Article number + **K4**

Colour graphite or silver
 graphite – article number
 silver – article number + **A**

Light distribution