

**BEGA****31 049**

Wall luminaire



Project · Reference number

Date

## Product data sheet

### Application

Impact resistant wall luminaire made of massive cast bronze.

Luminaire for versatile applications where a highly robust construction and corrosion resistance are required.

### Product description

Luminaire made of cast bronze and stainless steel  
Crystal glass with optical texture,  
white inside

Silicone gasket

2 mounting holes  $\varnothing$  5.5 mm

Distance apart 114 mm

2 cable entries for through-wiring of mains  
supply cable  $\varnothing$  7-10.5 mm

Connection terminal 2.5<sup>2</sup>

Earth conductor connection

BEGA Ultimate Driver<sup>®</sup>

LED power supply unit

220-240 V  $\sim$  0/50-60 Hz

DC 176-264 V

BEGA Thermal Switch<sup>®</sup>

Temporary thermal shutdown to protect  
temperature-sensitive components

Safety class I

Protection class IP 65

Dust-tight and protection against water jets

Impact strength IK06

Protection against mechanical  
impacts < 1 joule

– Safety mark

**CE** – Conformity mark

Weight: 4.2 kg

This product contains light sources of energy  
efficiency class(es) C

### Inrush current

Inrush current: 7.8 A / 112  $\mu$ s

Maximum number of luminaires of this  
type per miniature circuit breaker:

B 10A: 38 luminaires

B 16A: 61 luminaires

C 10A: 64 luminaires

C 16A: 102 luminaires

### Lamp

Module connected wattage 4.7 W

Luminaire connected wattage 5.8 W

Rated temperature  $t_a = 25$  °C

Ambient temperature  $t_{a \max} = 45$  °C

On request we can offer you modifications for  
environments with higher temperatures as a  
customized product.

### 31 049 K3

Module designation LED-0968/830

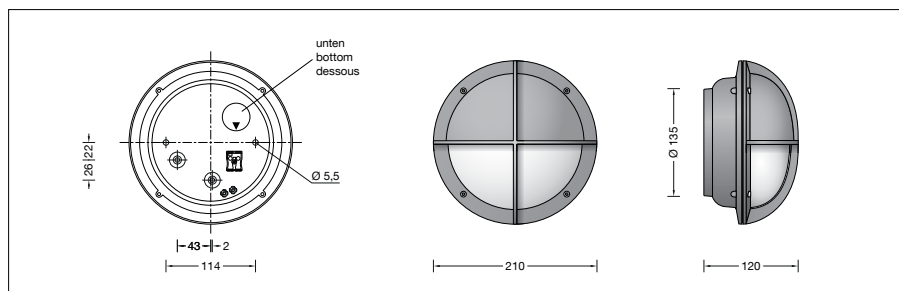
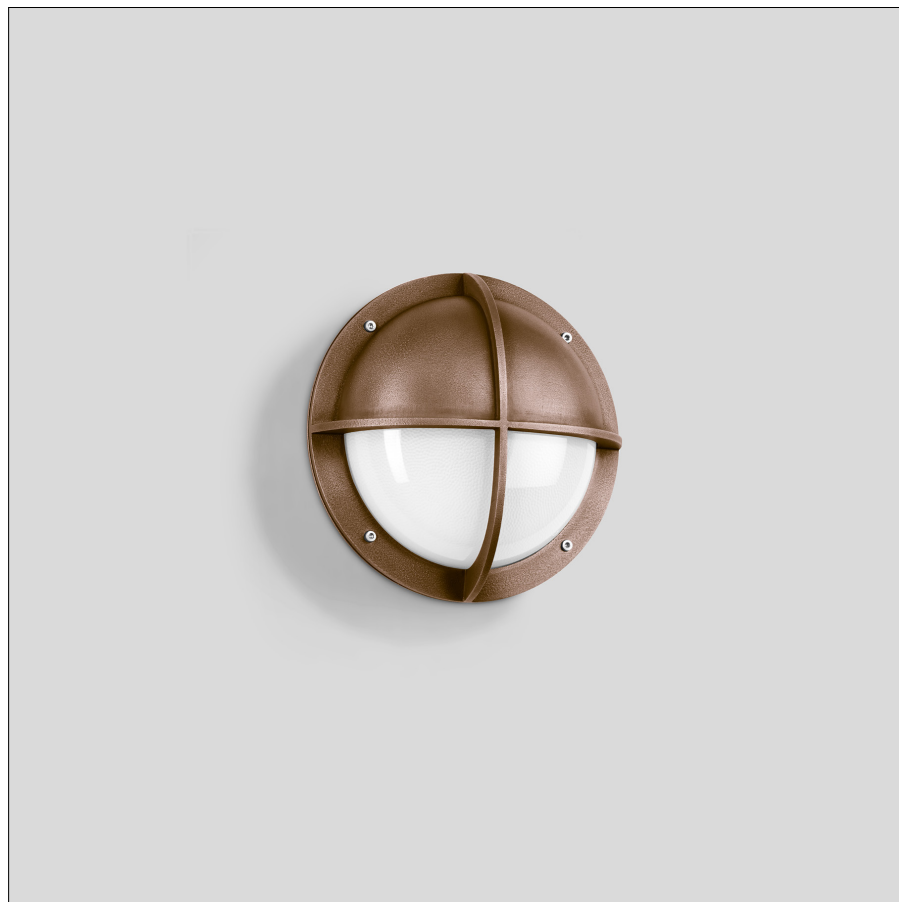
Colour temperature 3000 K

Colour rendering index CRI > 80

Module luminous flux 960 lm

Luminaire luminous flux 271 lm

Luminaire luminous efficiency 46,7 lm/W



### Service life · Ambient temperature

Rated temperature  $t_a = 25$  °C

LED psu: > 50,000 h

LED module: > 200,000 h (L 80 B 50)

100,000 h (L 90 B 50)

Ambient temperature max.  $t_a = 45$  °C (100 %)

LED psu: 50,000 h

LED module: > 200,000 h (L 80 B 50)

100,000 h (L 90 B 50)

### Lighting technology

Luminaire data for the DIALux lighting design  
program for outdoor lighting, street lighting  
and indoor lighting, as well as luminaire data in  
EULUMDAT and IES format are available on the  
BEGA website at [www.bega.com](http://www.bega.com).

### Bronze

The luminaire is made of massive cast bronze  
and delivered with the metal's natural surface.  
Time and weather factors create the natural  
patina characteristic for bronze.