

BEGA**22 432**

Ceiling · Wall · Pillar luminaire



Project · Reference number

Date

Product data sheet

Application

Unshielded ceiling, wall and pillar luminaire with high protection class.
A luminaire made of aluminium alloy and impact resistant crystal glass with light diffusing structures.

Product description

Luminaire made of aluminium alloy, aluminium and stainless steel
BEGA Unidure® coating technology
Crystal glass, white inside
2 mounting holes \varnothing 4.3 mm
Distance apart 64 mm
2 cable entries for through-wiring of mains supply cable \varnothing 7-10.5 mm
Connection terminal 2.5[□]
Earth conductor connection
BEGA Ultimate Driver®
LED power supply unit
220-240 V \sim 0/50-60 Hz
DC 176-264 V
BEGA Thermal Switch®
Temporary thermal shutdown to protect temperature-sensitive components
Safety class I
Protection class IP 65
Dust-tight and protection against water jets
Impact strength IK06
Protection against mechanical impacts < 1 joule
 – Safety mark
 – Conformity mark
Weight: 1.2 kg
This product contains light sources of energy efficiency class(es) C

Inrush current

Inrush current: 7.8 A / 112 μ s
Maximum number of luminaires of this type per miniature circuit breaker:

B 10A: 38 luminaires
B 16A: 61 luminaires
C 10A: 64 luminaires
C 16A: 102 luminaires

Lamp

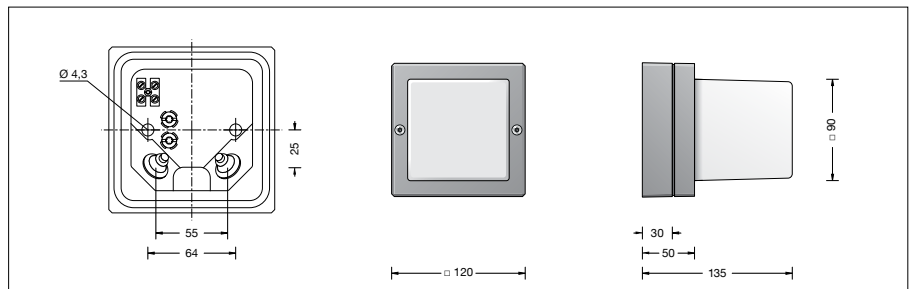
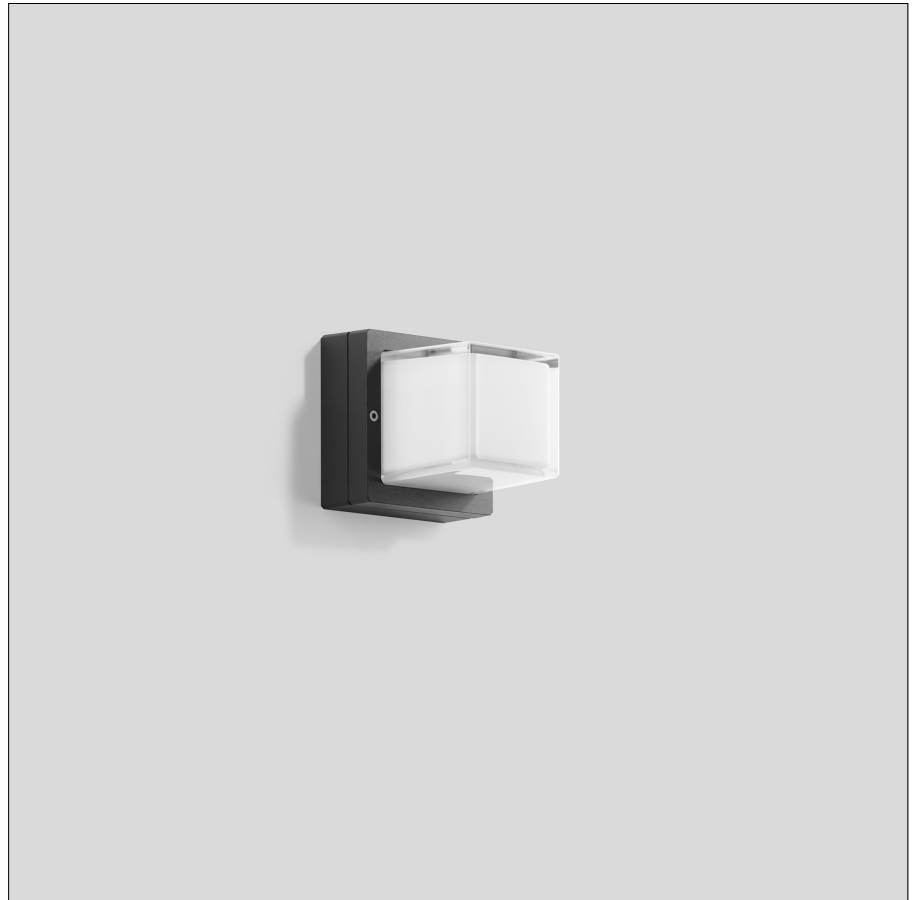
Module connected wattage 2.9 W
Luminaire connected wattage 4 W
Rated temperature $t_a = 25$ °C
Ambient temperature $t_{a\max} = 55$ °C

22 432 K3

Module designation LED-0444/830
Colour temperature 3000 K
Colour rendering index CRI > 80
Module luminous flux 550 lm
Luminaire luminous flux 306 lm
Luminaire luminous efficiency 76,5 lm/W

22 432 K4

Module designation LED-0444/840
Colour temperature 4000 K
Colour rendering index CRI > 80
Module luminous flux 565 lm
Luminaire luminous flux 314 lm
Luminaire luminous efficiency 78,5 lm/W



Service life · Ambient temperature

Rated temperature $t_a = 25$ °C
LED psu: > 50,000 h
LED module: > 200,000 h (L 80 B 50)
100,000 h (L 90 B 50)

Ambient temperature max. $t_a = 55$ °C (100 %)
LED psu: 50,000 h
LED module: 200,000 h (L 80 B 50)
100,000 h (L 90 B 50)

Lighting technology

Luminaire data for the DIALux lighting design program for outdoor lighting, street lighting and indoor lighting, as well as luminaire data in EULUMDAT and IES format are available on the BEGA website at www.bega.com.

Ratio of luminous flux

Luminous flux upper half-space 35,4 %
Luminous flux lower half-space 64,6 %

BUG rating according to IES TM-15-07:
0-2-1

CEN Flux Code according to EN 13032-2:
23-50-76-65-100-7-29-61-35

Article No. 22 432

LED colour temperature optionally 3000 K or 4000 K
3000 K – Article number + **K3**
4000 K – Article number + **K4**

Colour graphite or silver
graphite – article number
silver – article number + **A**

Light distribution

