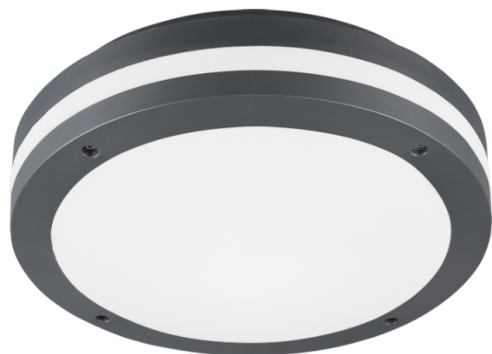




Ceiling lamp

PIAVE – 676960142

incl. 1x SMD LED, 11W · 1x 1180lm, 3000K



- **Motion sensor**
- **Wall- & ceiling mounting**
- **IP54**
- **Not dimmable**

Material construction

Plastic · Anthracite

Product dimensions

Height: 9cm
Diameter: 30cm
Weight: 0,845kg

Technical data

Light source: SMD – LED (integrated)
Watt: 11W
Lumen: 1x 1180lm
Kelvin: 3000K
Color rendering (CRI): > 80 CRI
Lifetime: 20000H
Switching cycles: 15000x ON/OFF

Support & Download Links

[Manual](#)
[Drawing](#)
[Declaration of conformity](#)
[Safety notes](#)
[Warranty Statement](#)

operating voltage: 230V ~ 50Hz
Protection grade: 2
IP classification: IP54

Dealer information

EAN Code: 4017807453416
Customs number: 94051140900

Packaging dimensions & weight

Quantities: 1
Width: 32cm
Height: 32cm
Depth: 10cm
Weight: 1,085kg