

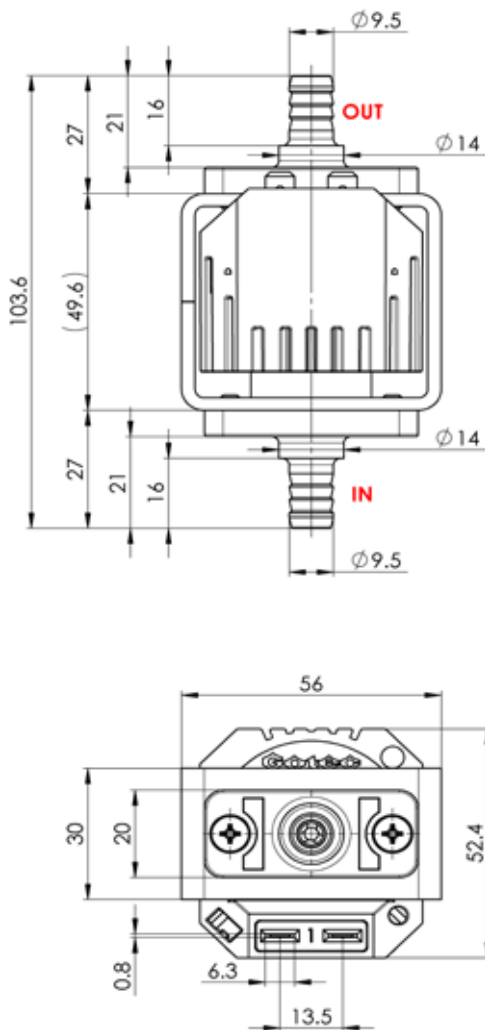
SOLENOID PUMPS

EKS17

TECHNICAL DATA



DIMENSIONS



NOMINAL RATED DATA

Max. pressure	1.9[bar]
Max. flow rate	120[l/h]
Max. suction height	3[m]
Viscosity range	1..600[mm ² /s]
Filter	Mesh 100
Tension	230[V] (24, 110V)
Frequency	50, 60[Hz]
Electrical connection	2 x 6.3 x 0.8 [mm]
Power	40[W]
Weight	~430[g]
Temperature	1..50[°C]
Insulation	Classe H Classe 2
	100% ED / 20 [°C]

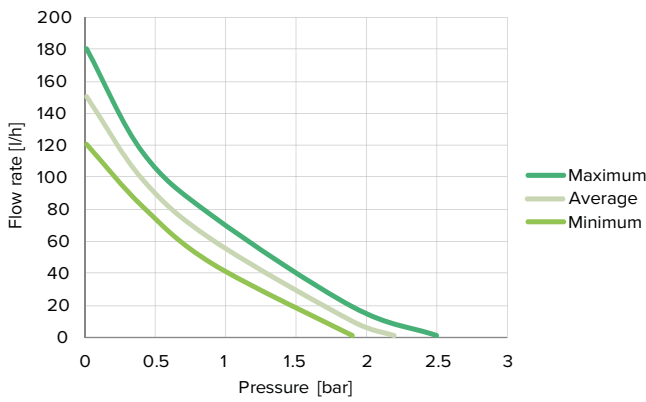
SOLENOID PUMPS

EKS17 230V

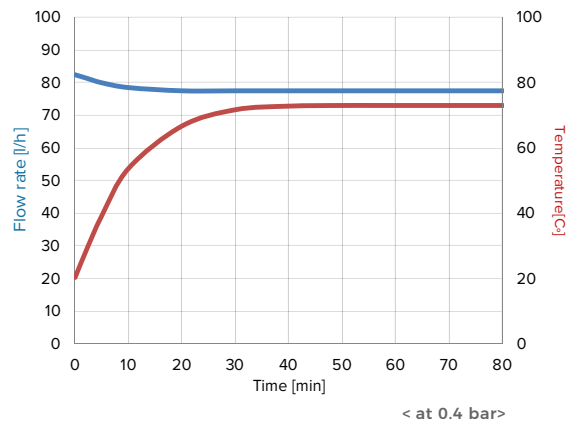
TECHNICAL DATA



PERFORMANCES



FLOW RATE & TEMPERATURE



Tested with 20°C of water at ambient temperature

ACCESSORIES

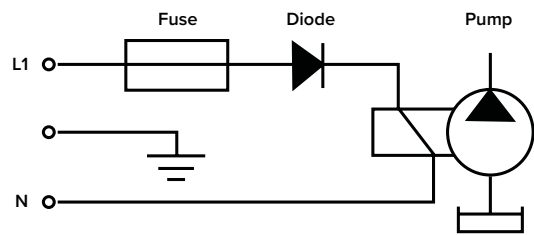


Cable with a diode

Thermal security

Large choice of materials & options

ELECTRIC WIRING DIAGRAM



Please refer to instruction manual for more installation details. For more information, visit our website : www.gotec.ch

Certifications



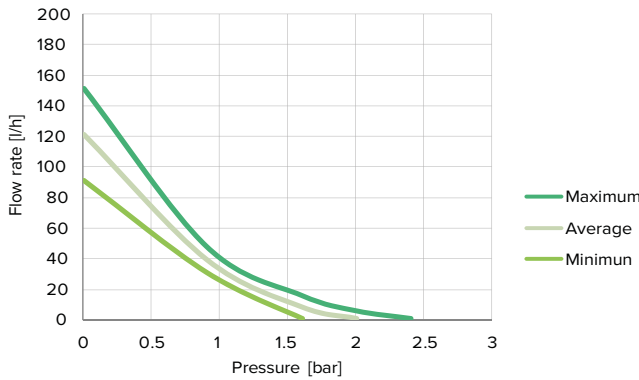
SOLENOID PUMPS

EKS17 24VAC

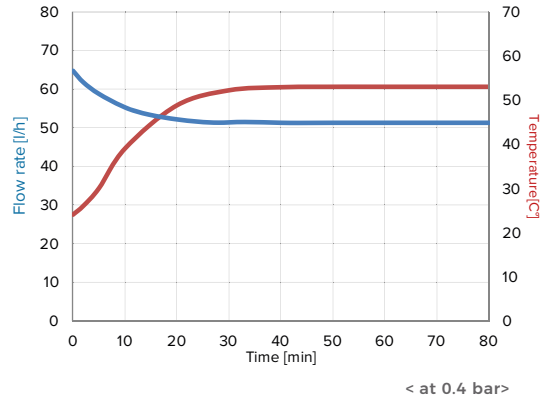


TECHNICAL DATA

PERFORMANCES



FLOW RATE & TEMPERATURE



Tested with 20°C of water at ambient temperature

ACCESSORIES

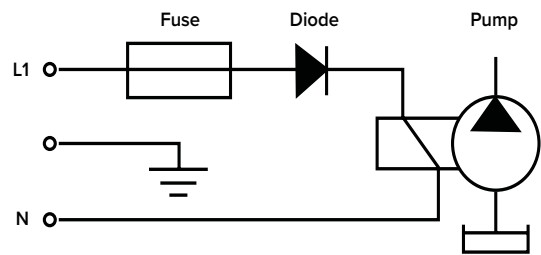


Cable with a diode

Thermal security

Large choice of materials & options

ELECTRIC WIRING DIAGRAM



Please refer to instruction manual for more installation details. For more information, visit our website : www.gotec.ch

Certifications

